

FEATURE RECORD

Curles Plantation

44He388

Feature # F88-24

RECORDED BY Trower

DATES 21 June

Begun Completed

TYPE OF FEATURE:  
postmill

DIMENSIONS:

DEPTHS: Top \_\_\_\_\_ Bottom \_\_\_\_\_ BELOW \_\_\_\_\_

ASSOCIATED E.U. #'s:

<u>307A</u>	Description	<u>layer 1</u>
_____	Description	_____
_____	Description	_____
_____	Description	_____
_____	Description	_____
_____	Description	_____
_____	Description	_____
_____	Description	_____
_____	Description	_____
_____	Description	_____
_____	Description	_____
_____	Description	_____
_____	Description	_____
_____	Description	_____
_____	Description	_____

COMMENTS:

Attach appropriate profile drawings.

EXCAVATION UNIT RECORD

Curles Plantation

44He388

E.U. # 3-79

RECORDED BY Theror

DATES 21 June  
BEGUN

COMPLETED

TYPE OF UNIT: p-mold

- Test pit (no. \_\_\_\_\_) (attach to Test Pit Record)
- Square (size \_\_\_\_\_) (attach to Square Record)
- Trench (no. \_\_\_\_\_) (attach to Trench Record)
- Feature (no. 88-24) (attach to Feature Record)
- Post hole (no. \_\_\_\_\_) (attach to Pier/Post Record)
- Post mold (no. \_\_\_\_\_) (attach to Pier/Post Record)
- Pier (no. \_\_\_\_\_) (attach to Pier/Post Record)

PROVENIENCE: (skip if feature)  Exact  Square

(SW corner) \_\_\_\_\_ N \_\_\_\_\_ E

DEPTHS: Top \_\_\_\_\_ Bottom \_\_\_\_\_ BELOW \_\_\_\_\_

STRATUM \_\_\_\_\_ LEVEL \_\_\_\_\_

E.U.s ABOVE \_\_\_\_\_

E.U.s BELOW \_\_\_\_\_

CORRELATED E.U.s \_\_\_\_\_

SOIL DESCRIPTION:

EXCAVATED BY:  Trowel  Shovel  Screened

SAMPLES TAKEN:

Soil (no. \_\_\_\_\_)

Constant Volume (no. \_\_\_\_\_)

COMMENTS:

Attach appropriate level drawings.

FEATURE RECORD

Curles Plantation

44He388

Feature # 88-27

RECORDED BY Kurv N

DATES 28 Jun

TYPE OF FEATURE: Pit

Begun

Completed

DIMENSIONS:

DEPTHS: Top \_\_\_\_\_ Bottom \_\_\_\_\_ BELOW \_\_\_\_\_

ASSOCIATED E.U. #'s:

- 3096 Description \_\_\_\_\_
- \_\_\_\_\_ Description \_\_\_\_\_
- \_\_\_\_\_ Description \_\_\_\_\_
- \_\_\_\_\_ Description \_\_\_\_\_
- \_\_\_\_\_ Description \_\_\_\_\_
- \_\_\_\_\_ Description \_\_\_\_\_
- \_\_\_\_\_ Description \_\_\_\_\_
- \_\_\_\_\_ Description \_\_\_\_\_
- \_\_\_\_\_ Description \_\_\_\_\_
- \_\_\_\_\_ Description \_\_\_\_\_
- \_\_\_\_\_ Description \_\_\_\_\_
- \_\_\_\_\_ Description \_\_\_\_\_
- \_\_\_\_\_ Description \_\_\_\_\_
- \_\_\_\_\_ Description \_\_\_\_\_

COMMENTS:

apparently a rabbit's pit with less glass & lime than 88-28

Attach appropriate profile drawings.

EXCAVATION UNIT RECORD

Curles Plantation

44He388

E.U. # 3096

RECORDED BY K. V. H.

DATES 28 June

BEGUN

COMPLETED

TYPE OF UNIT:

- Test pit (no. \_\_\_\_\_) (attach to Test Pit Record)
- Square (size \_\_\_\_\_) (attach to Square Record)
- Trench (no. \_\_\_\_\_) (attach to Trench Record)
- Feature (no. \_\_\_\_\_) (attach to Feature Record)
- Post hole (no. \_\_\_\_\_) (attach to Pier/Post Record)
- Post mold (no. \_\_\_\_\_) (attach to Pier/Post Record)
- Pier (no. \_\_\_\_\_) (attach to Pier/Post Record)

PROVENIENCE: (skip if feature)  Exact  Square

(SW corner) \_\_\_\_\_ N \_\_\_\_\_ E

DEPTHS: Top \_\_\_\_\_ Bottom \_\_\_\_\_ BELOW \_\_\_\_\_

STRATUM \_\_\_\_\_ LEVEL \_\_\_\_\_

E.U.s ABOVE \_\_\_\_\_

E.U.s BELOW 3094 \_\_\_\_\_

CORRELATED E.U.s \_\_\_\_\_

SOIL DESCRIPTION:

EXCAVATED BY:  Trowel  Shovel  Screened

SAMPLES TAKEN:

Soil (no. \_\_\_\_\_)

Constant Volume (no. \_\_\_\_\_)

COMMENTS:

Attach appropriate level drawings.

FEATURE RECORD

Curles Plantation

44He388

Feature # 88-28

RECORDED BY Dagmar

DATES 28 June  
Begun

29 June  
Completed

TYPE OF FEATURE:

DIMENSIONS:

*not taken as far as we know.*

DEPTHS: Top \_\_\_\_\_ Bottom \_\_\_\_\_ BELOW \_\_\_\_\_

ASSOCIATED E.U. #'s:

- 3094 Description level 2 (F88-28) Below clay cap
- \_\_\_\_\_ Description \_\_\_\_\_
- \_\_\_\_\_ Description \_\_\_\_\_
- \_\_\_\_\_ Description \_\_\_\_\_
- \_\_\_\_\_ Description \_\_\_\_\_
- \_\_\_\_\_ Description \_\_\_\_\_
- \_\_\_\_\_ Description \_\_\_\_\_
- \_\_\_\_\_ Description \_\_\_\_\_
- \_\_\_\_\_ Description \_\_\_\_\_
- \_\_\_\_\_ Description \_\_\_\_\_
- \_\_\_\_\_ Description \_\_\_\_\_
- \_\_\_\_\_ Description \_\_\_\_\_
- \_\_\_\_\_ Description \_\_\_\_\_
- \_\_\_\_\_ Description \_\_\_\_\_
- \_\_\_\_\_ Description \_\_\_\_\_

COMMENTS:

*Disturbed destruction running from center of building to well beyond the W. wall. The sediment in the feature is likely the result of a colluvial wash.*

Attach appropriate profile drawings.

EXCAVATION UNIT RECORD

Curles Plantation

44He388

E.U. # 3094

RECORDED BY Dagmar VT

DATES 28 June June 29  
BEGUN COMPLETED

TYPE OF UNIT:

- Test pit (no. \_\_\_\_\_) (attach to Test Pit Record)
- Square (size \_\_\_\_\_) (attach to Square Record)
- Trench (no. \_\_\_\_\_) (attach to Trench Record)
- Feature (no. 88-28) (attach to Feature Record)
- Post hole (no. \_\_\_\_\_) (attach to Pier/Post Record)
- Post mold (no. \_\_\_\_\_) (attach to Pier/Post Record)
- Pier (no. \_\_\_\_\_) (attach to Pier/Post Record)

PROVENIENCE: (skip if feature)  Exact  Square  
(SW corner) \_\_\_\_\_ N \_\_\_\_\_ E

DEPTHS: Top \_\_\_\_\_ Bottom \_\_\_\_\_ BELOW \_\_\_\_\_

STRATUM \_\_\_\_\_ LEVEL \_\_\_\_\_

E.U.s ABOVE (EU 3065, F88-3) \_\_\_\_\_

E.U.s BELOW (F88-45 - EU 3088) \_\_\_\_\_

CORRELATED E.U.s \_\_\_\_\_

SOIL DESCRIPTION: loosely packed, dark brown sediment mixed with brick fragments and mortar,

EXCAVATED BY:  Trowel  Shovel  Screened

SAMPLES TAKEN:

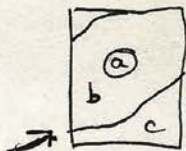
Soil (no. \_\_\_\_\_)

Constant Volume (no. \_\_\_\_\_)

COMMENTS: lays over F88-45 ~~at~~ to = 2.5 meters W of S wall

- found bone, bottle glass, some pipe stems, big chunk of plaster that was smooth on one surface - Attach appropriate level drawings. amid all the sediment + rubble - we stopped digging when found only brick + brick dust.

FEATURE RECORD



Curles Plantation

44He388

Feature # F 88-40

RECORDED BY Bruce R.

DATES 17 June  
Begun

21 JUNE 1988  
Completed

TYPE OF FEATURE: POST FEATURE

DIMENSIONS:

DEPTHS: Top 2.16m Bottom 2.65m BELOW DATUM PLANE

ASSOCIATED E.U. #'s:

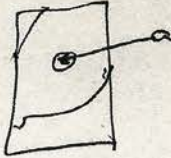
<u>3064</u>	Description	<u>layer 1 of mold (88-40a)</u>
<u>3073</u>	Description	<u>layer 1 of hole (88-40b)</u>
<u>3083</u>	Description	<u>LAYER 2 OF HOLE (88-40c)</u>
	Description	
	Description	
	Description	
	Description	
	Description	
	Description	
	Description	
	Description	
	Description	
	Description	

COMMENTS:

40A IS THE POST MOLD. 40B IS A POST HOLE THAT INTRUDES INTO 40C, AN EARLIER POST HOLE. THE ENTIRE FEATURE INTRUDES INTO RUBBLE LAYER (F88-39). FEW DIAGNOSTIC ARTIFACTS WERE FOUND. THE FEATURE IS RECTANGULAR - 51cm NORTH + SOUTH, 36cm EAST + WEST, AND ±16cm DEEP. 40A AND 40C CONTAINED A GREAT DEAL OF CHARCOAL. 40C HAD MANY TINY BRICK CHIPS. 40A HAD BRICK CHIPS ALSO, BUT FEWER THAN IN 40C.

Attach appropriate profile drawings.

EXCAVATION UNIT RECORD



Curles Plantation

44He388

E.U. # 3064

RECORDED BY BRUCE F. RODGERS

DATES 6/17/88

6/17/88

BEGUN

COMPLETED

TYPE OF UNIT:

\_\_\_ Test pit (no. \_\_\_\_\_) (attach to Test Pit Record)

\_\_\_ Square (size \_\_\_\_\_) (attach to Square Record)

\_\_\_ Trench (no. \_\_\_\_\_) (attach to Trench Record)

Feature (no. 28-40 (a)) (attach to Feature Record)

\_\_\_ Post hole (no. \_\_\_\_\_) (attach to Pier/Post Record)

\_\_\_ Post mold (no. \_\_\_\_\_) (attach to Pier/Post Record)

\_\_\_ Pier (no. \_\_\_\_\_) (attach to Pier/Post Record)

PROVENIENCE: (skip if feature) \_\_\_ Exact \_\_\_ Square

(SW corner) \_\_\_\_\_ N \_\_\_\_\_ E

DEPTHS: Top 2.16m BD Bottom 2.65m BD BELOW DATUM PLANE

STRATUM \_\_\_\_\_ LEVEL \_\_\_\_\_

E.U.s ABOVE \_\_\_\_\_

E.U.s BELOW \_\_\_\_\_

CORRELATED E.U.s \_\_\_\_\_

SOIL DESCRIPTION:

VERY SOFT, DARK, lots of CHARCOAL + BRICK CHIPS

EXCAVATED BY:  Trowel \_\_\_ Shovel \_\_\_ Screened

SAMPLES TAKEN:

\_\_\_ Soil (no. \_\_\_\_\_)

\_\_\_ Constant Volume (no. \_\_\_\_\_)

COMMENTS: post mold

SOIL WAS VERY SOFT. FEATURE INTRUDES INTO RUBBLE LAYER. MOLD IS ABOUT 16 1/2 CM IN DIAMETER. ARTIFACTS INCLUDE BONE, BOTTLE GLASS, SOME NAILS AND SOME SHELL

Attach appropriate level drawings.



EXCAVATION UNIT RECORD



Curles Plantation

44He388

E.U. # 3073

RECORDED BY Bruce R

DATES 17 June  
BEGUN

20 JUNE, 1988  
COMPLETED

TYPE OF UNIT:

- Test pit (no. \_\_\_\_\_) (attach to Test Pit Record)
- Square (size \_\_\_\_\_) (attach to Square Record)
- Trench (no. \_\_\_\_\_) (attach to Trench Record)
- Feature (no. 88-40(b)) (attach to Feature Record)
- Post hole (no. \_\_\_\_\_) (attach to Pier/Post Record)
- Post mold (no. \_\_\_\_\_) (attach to Pier/Post Record)
- Pier (no. \_\_\_\_\_) (attach to Pier/Post Record)

PROVENIENCE: (skip if feature)  Exact  Square

(SW corner) \_\_\_\_\_ N \_\_\_\_\_ E

DEPTHS: Top 2.16m Bottom 2.65m BELOW DATUM PLANE

STRATUM \_\_\_\_\_ LEVEL \_\_\_\_\_

E.U.s ABOVE \_\_\_\_\_

E.U.s BELOW \_\_\_\_\_

CORRELATED E.U.s \_\_\_\_\_

SOIL DESCRIPTION:

SOFT, MEDIUM-DARK, A FEW PIECES OF CHARCOAL + SMALL BRICK CN'G

EXCAVATED BY:  Trowel  Shovel  Screened

SAMPLES TAKEN:

\_\_\_\_ Soil (no. \_\_\_\_\_)

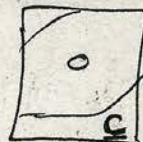
\_\_\_\_ Constant Volume (no. \_\_\_\_\_)

COMMENTS: POST HOLE

THE SOIL WAS SOFT BUT MORE COMPACT AND LESS DARK THAN THAT OF 88-40A. FEATURE INTRUDES INTO EARLIER POST HOLE (88-40C). FEW ARTIFACTS. INCLUDE BONE AND SOME GLASS.

Attach appropriate level drawings.

EXCAVATION UNIT RECORD



Curles Plantation

44He388

E.U. # 3083

RECORDED BY Bruce R

DATES 21 June 88 21 JUNE 88  
BEGUN COMPLETED

TYPE OF UNIT:

- Test pit (no. \_\_\_\_\_) (attach to Test Pit Record)
- Square (size \_\_\_\_\_) (attach to Square Record)
- Trench (no. \_\_\_\_\_) (attach to Trench Record)
- Feature (no. 88-408C) (attach to Feature Record)
- Post hole (no. \_\_\_\_\_) (attach to Pier/Post Record)
- Post mold (no. \_\_\_\_\_) (attach to Pier/Post Record)
- Pier (no. \_\_\_\_\_) (attach to Pier/Post Record)

PROVENIENCE: (skip if feature)  Exact  Square  
(SW corner) \_\_\_\_\_ N \_\_\_\_\_ E

DEPTHS: Top 2.16 m Bottom 2.65 m BELOW DATUM PLANE

STRATUM \_\_\_\_\_ LEVEL \_\_\_\_\_

E.U.s ABOVE \_\_\_\_\_

E.U.s BELOW \_\_\_\_\_

CORRELATED E.U.s \_\_\_\_\_

SOIL DESCRIPTION:

DARK, MUCH CHARCOAL AND BRICK CHIPS

EXCAVATED BY:  Trowel  Shovel  Screened

SAMPLES TAKEN:

Soil (no. \_\_\_\_\_)

Constant Volume (no. \_\_\_\_\_)

COMMENTS: FEATURE INTRUDES INTO RUBBLE LAYER.

MANY BONES WERE FOUND - SOME ROBERT, SOME DOMESTIC. THE SOIL WAS FULL OF CHARCOAL AND BRICK BITS. A FEW PIECES OF BOTTLE GLASS AND NAILS WERE FOUND, NO CERAMICS.

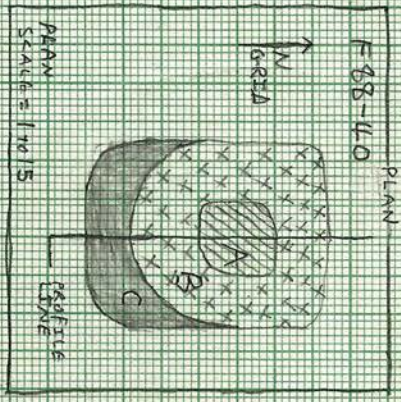
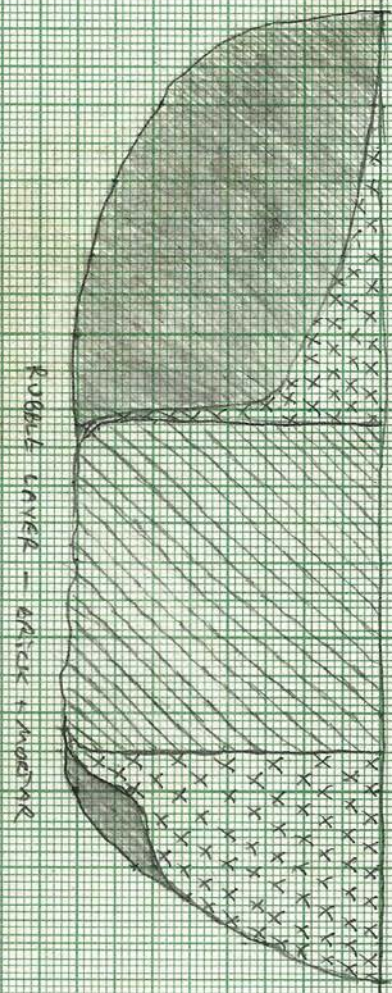
Attach appropriate level drawings.

GRID SOUTH  
←

GRID NORTH  
→

BOTTOM of PLow ZONE

BOTTOM of PLow ZONE



E.V. 3064



F88-40A Post mound  
DARK SFT SOIL w/ CHALK

44HE388

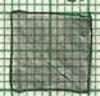
E.V. 3073



F88-40B LATER POST HOLE  
MEDIUM DARK SOIL w/ LITTLE CHALK

FEATURE 88-40 (A,B,C)

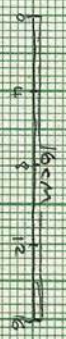
E.V. 3083



F88-40C EARLIER POST HOLE  
DARK SOIL w/ MUCH CHALK AND  
DARK DEBRIS

PROFILE

SCALE: 1cm = 4cm



JUNE 24, 1948  
BAVEL P. 1200-485

FEATURE RECORD

Curles Plantation

44He388

Feature # 88-41

RECORDED BY Dawn

DATES 20 June 88  
Begun \_\_\_\_\_ Completed \_\_\_\_\_

TYPE OF FEATURE:

DIMENSIONS:

DEPTHS: Top \_\_\_\_\_ Bottom \_\_\_\_\_ BELOW \_\_\_\_\_

ASSOCIATED E.U. #'s:

- 3076 Description post hole
- \_\_\_\_\_ Description \_\_\_\_\_
- \_\_\_\_\_ Description \_\_\_\_\_
- \_\_\_\_\_ Description \_\_\_\_\_
- \_\_\_\_\_ Description \_\_\_\_\_
- \_\_\_\_\_ Description \_\_\_\_\_
- \_\_\_\_\_ Description \_\_\_\_\_
- \_\_\_\_\_ Description \_\_\_\_\_
- \_\_\_\_\_ Description \_\_\_\_\_
- \_\_\_\_\_ Description \_\_\_\_\_
- \_\_\_\_\_ Description \_\_\_\_\_
- \_\_\_\_\_ Description \_\_\_\_\_
- \_\_\_\_\_ Description \_\_\_\_\_

COMMENTS:

Attach appropriate profile drawings.

EXCAVATION UNIT RECORD

Curles Plantation

44He388

E.U. # 3076

RECORDED BY Dawn

DATES \_\_\_\_\_  
BEGUN \_\_\_\_\_ COMPLETED \_\_\_\_\_

TYPE OF UNIT: posthole

- Test pit (no. \_\_\_\_\_) (attach to Test Pit Record)
- Square (size \_\_\_\_\_) (attach to Square Record)
- Trench (no. ~~F 88-41~~) (attach to Trench Record)
- Feature (no. F 88-41) (attach to Feature Record)
- Post hole (no. \_\_\_\_\_) (attach to Pier/Post Record)
- Post mold (no. \_\_\_\_\_) (attach to Pier/Post Record)
- Pier (no. \_\_\_\_\_) (attach to Pier/Post Record)

PROVENIENCE: (skip if feature)  Exact  Square

(SW corner) \_\_\_\_\_ N \_\_\_\_\_ E

DEPTHS: Top 2.35 Bottom \_\_\_\_\_ BELOW datum plane

STRATUM \_\_\_\_\_ LEVEL \_\_\_\_\_

E.U.s ABOVE ~~\_\_\_\_\_~~ \_\_\_\_\_

E.U.s BELOW \_\_\_\_\_

CORRELATED E.U.s \_\_\_\_\_

SOIL DESCRIPTION:

EXCAVATED BY:  Trowel  Shovel  Screened

SAMPLES TAKEN:

Soil (no. \_\_\_\_\_)

Constant Volume (no. \_\_\_\_\_)

COMMENTS:

Attach appropriate level drawings.

FEATURE RECORD

Curles Plantation

44He388

Feature # 88-45

RECORDED BY Kurd

DATES 24 June  
Begun

7-6-88  
Completed

TYPE OF FEATURE: destruction

DIMENSIONS:

DEPTHS: Top \_\_\_\_\_ Bottom \_\_\_\_\_ BELOW \_\_\_\_\_

ASSOCIATED E.U. #'s:

- 3088 Description brick & mortar
- \_\_\_\_\_ Description \_\_\_\_\_
- \_\_\_\_\_ Description \_\_\_\_\_
- \_\_\_\_\_ Description \_\_\_\_\_
- \_\_\_\_\_ Description \_\_\_\_\_
- \_\_\_\_\_ Description \_\_\_\_\_
- \_\_\_\_\_ Description \_\_\_\_\_
- \_\_\_\_\_ Description \_\_\_\_\_
- \_\_\_\_\_ Description \_\_\_\_\_
- \_\_\_\_\_ Description \_\_\_\_\_
- \_\_\_\_\_ Description \_\_\_\_\_
- \_\_\_\_\_ Description \_\_\_\_\_

COMMENTS: number of wedge shaped bricks found   
broken bricks  
taken down to roof tile level

Attach appropriate profile drawings.

EXCAVATION UNIT RECORD

Curles Plantation

44He388

E.U. # 3088

RECORDED BY Kurt N

DATES 24 June  
BEGUN

COMPLETED

TYPE OF UNIT: destruction

Test pit (no. \_\_\_\_\_) (attach to Test Pit Record)

Square (size \_\_\_\_\_) (attach to Square Record)

Trench (no. \_\_\_\_\_) (attach to Trench Record)

Feature (no. 88-45) (attach to Feature Record)

Post hole (no. \_\_\_\_\_) (attach to Pier/Post Record)

Post mold (no. \_\_\_\_\_) (attach to Pier/Post Record)

Pier (no. \_\_\_\_\_) (attach to Pier/Post Record)

PROVENIENCE: (skip if feature)  Exact  Square

(SW corner) \_\_\_\_\_ N \_\_\_\_\_ E

DEPTHS: Top \_\_\_\_\_ Bottom \_\_\_\_\_ BELOW \_\_\_\_\_

STRATUM \_\_\_\_\_ LEVEL \_\_\_\_\_

E.U.s ABOVE \_\_\_\_\_

E.U.s BELOW \_\_\_\_\_

CORRELATED E.U.s \_\_\_\_\_

SOIL DESCRIPTION:

EXCAVATED BY:  Trowel  Shovel  Screened

SAMPLES TAKEN:

Soil (no. \_\_\_\_\_)

Constant Volume (no. \_\_\_\_\_)

COMMENTS: SF 88.1.39 (window casement) found here

Attach appropriate level drawings.

FEATURE RECORD

Curles Plantation

44He388

Feature # 88-46

RECORDED BY Kur J. V.

DATES 24 June 88 28 Jun  
Begun Completed

TYPE OF FEATURE:

DIMENSIONS:

DEPTHS: Top \_\_\_\_\_ Bottom \_\_\_\_\_ BELOW \_\_\_\_\_

ASSOCIATED E.U. #'s:

- 3089 Description \_\_\_\_\_
- \_\_\_\_\_ Description \_\_\_\_\_
- \_\_\_\_\_ Description \_\_\_\_\_
- \_\_\_\_\_ Description \_\_\_\_\_
- \_\_\_\_\_ Description \_\_\_\_\_
- \_\_\_\_\_ Description \_\_\_\_\_
- \_\_\_\_\_ Description \_\_\_\_\_
- \_\_\_\_\_ Description \_\_\_\_\_
- \_\_\_\_\_ Description \_\_\_\_\_
- \_\_\_\_\_ Description \_\_\_\_\_
- \_\_\_\_\_ Description \_\_\_\_\_
- \_\_\_\_\_ Description \_\_\_\_\_

COMMENTS:

Attach appropriate profile drawings.



EXCAVATION UNIT RECORD

Curles Plantation

44He388

E.U. # 3089

RECORDED BY Kurd H.

DATES 24 June  
BEGUN

COMPLETED

TYPE OF UNIT:

- Test pit (no. \_\_\_\_\_) (attach to Test Pit Record)
- Square (size \_\_\_\_\_) (attach to Square Record)
- Trench (no. \_\_\_\_\_) (attach to Trench Record)
- Feature (no. 88-46) (attach to Feature Record)
- Post hole (no. \_\_\_\_\_) (attach to Pier/Post Record)
- Post mold (no. \_\_\_\_\_) (attach to Pier/Post Record)
- Pier (no. \_\_\_\_\_) (attach to Pier/Post Record)

PROVENIENCE: (skip if feature)  Exact  Square

(SW corner) \_\_\_\_\_ N \_\_\_\_\_ E

DEPTHS: Top \_\_\_\_\_ Bottom \_\_\_\_\_ BELOW \_\_\_\_\_

STRATUM \_\_\_\_\_ LEVEL \_\_\_\_\_

E.U.s ABOVE \_\_\_\_\_

E.U.s BELOW 3088 \_\_\_\_\_

CORRELATED E.U.s \_\_\_\_\_

SOIL DESCRIPTION: DARK SOIL

EXCAVATED BY:  Trowel  Shovel  Screened

SAMPLES TAKEN:

- Soil (no. \_\_\_\_\_)
- Constant Volume (no. \_\_\_\_\_)

COMMENTS:

Attach appropriate level drawings.

NEVER EXCAVATED!

FEATURE RECORD

Curles Plantation

44He388

Feature #

88-47

RECORDED BY

L. J. W.

DATES

27 June

\_\_\_\_\_

Completed

TYPE OF FEATURE:

DIMENSIONS:

DEPTHS: Top \_\_\_\_\_

Bottom \_\_\_\_\_

BELOW \_\_\_\_\_

ASSOCIATED E.U. #'s:

3093

Description

section in N end of T87A

Description \_\_\_\_\_

Description \_\_\_\_\_

Description \_\_\_\_\_

Description \_\_\_\_\_

Description \_\_\_\_\_

Description \_\_\_\_\_

Description \_\_\_\_\_

Description \_\_\_\_\_

Description \_\_\_\_\_

Description \_\_\_\_\_

Description \_\_\_\_\_

COMMENTS:

Attach appropriate profile drawings.

EXCAVATION UNIT RECORD

Curles Plantation

44He388

E.U. # 3093

RECORDED BY \_\_\_\_\_ DATES \_\_\_\_\_  
BEGUN \_\_\_\_\_ COMPLETED \_\_\_\_\_

TYPE OF UNIT:

- \_\_\_ Test pit (no. \_\_\_\_\_) (attach to Test Pit Record)
- \_\_\_ Square (size \_\_\_\_\_) (attach to Square Record)
- \_\_\_ Trench (no. \_\_\_\_\_) (attach to Trench Record)
- \_\_\_ Feature (no. \_\_\_\_\_) (attach to Feature Record)
- \_\_\_ Post hole (no. \_\_\_\_\_) (attach to Pier/Post Record)
- \_\_\_ Post mold (no. \_\_\_\_\_) (attach to Pier/Post Record)
- \_\_\_ Pier (no. \_\_\_\_\_) (attach to Pier/Post Record)

PROVENIENCE: (skip if feature) \_\_\_ Exact \_\_\_ Square

(SW corner) \_\_\_\_\_ N \_\_\_\_\_ E

DEPTHS: Top \_\_\_\_\_ Bottom \_\_\_\_\_ BELOW \_\_\_\_\_

STRATUM \_\_\_\_\_ LEVEL \_\_\_\_\_

E.U.s ABOVE \_\_\_\_\_

E.U.s BELOW \_\_\_\_\_

CORRELATED E.U.s \_\_\_\_\_

SOIL DESCRIPTION:

EXCAVATED BY: \_\_\_ Trowel \_\_\_ Shovel \_\_\_ Screened

SAMPLES TAKEN:

\_\_\_ Soil (no. \_\_\_\_\_)

\_\_\_ Constant Volume (no. \_\_\_\_\_)

COMMENTS:

Attach appropriate level drawings.