

FEATURE RECORD

Curles Plantation

44He388

Feature # 88-67

RECORDED BY KJ

DATES

5 July/88  
Begun

7 July/88  
Completed

TYPE OF FEATURE: wall fall

DIMENSIONS:

DEPTHS: Top \_\_\_\_\_ Bottom \_\_\_\_\_ BELOW \_\_\_\_\_

ASSOCIATED E.U. #'s:

3148

Description \_\_\_\_\_

Description \_\_\_\_\_

Description \_\_\_\_\_

Description \_\_\_\_\_

Description \_\_\_\_\_

Description \_\_\_\_\_

Description \_\_\_\_\_

Description \_\_\_\_\_

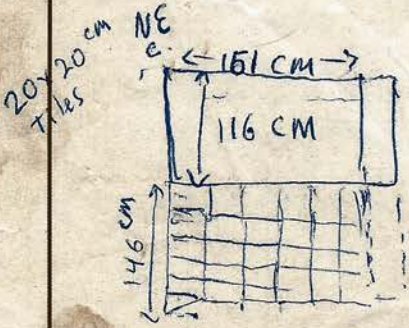
Description \_\_\_\_\_

Description \_\_\_\_\_

Description \_\_\_\_\_

Description \_\_\_\_\_

COMMENTS: Depths of E.U. covered after cleaning:



Attach appropriate profile drawings.

FEATURE RECORD

Curles Plantation

44He388

Feature # 88-68

RECORDED BY KJ

DATES 11 July  
Begun

Completed

TYPE OF FEATURE: posthole under F88-68

DIMENSIONS:

DEPTHS: Top \_\_\_\_\_ Bottom \_\_\_\_\_ BELOW \_\_\_\_\_

ASSOCIATED E.U. #'s:

<u>5119</u>	Description	<u>posthole</u>
_____	Description	_____
_____	Description	_____
_____	Description	_____
_____	Description	_____
_____	Description	_____
_____	Description	_____
_____	Description	_____
_____	Description	_____
_____	Description	_____
_____	Description	_____
_____	Description	_____
_____	Description	_____
_____	Description	_____
_____	Description	_____

COMMENTS:

Attach appropriate profile drawings.

F 88-68

EXCAVATION UNIT RECORD

Curles Plantation

44He388

E.U. # 3119

RECORDED BY LB

DATES 7-5-88  
BEGUN

7-6-88  
COMPLETED

TYPE OF UNIT:

     Test pit (no.     ) (attach to Test Pit Record)

     Square (size     ) (attach to Square Record)

     Trench (no.     ) (attach to Trench Record)

Feature (no. F88-68) (attach to Feature Record)

     Post hole (no.     ) (attach to Pier/Post Record)

     Post mold (no.     ) (attach to Pier/Post Record)

     Pier (no.     ) (attach to Pier/Post Record)

\* *Postmolds under F81*

PROVENIENCE: (skip if feature)      Exact      Square

(SW corner)      N      E

DEPTHS: Top      Bottom      BELOW     

STRATUM      LEVEL     

E.U.s ABOVE                              

E.U.s BELOW                              

CORRELATED E.U.s                              

SOIL DESCRIPTION:

EXCAVATED BY:      Trowel      Shovel      Screened

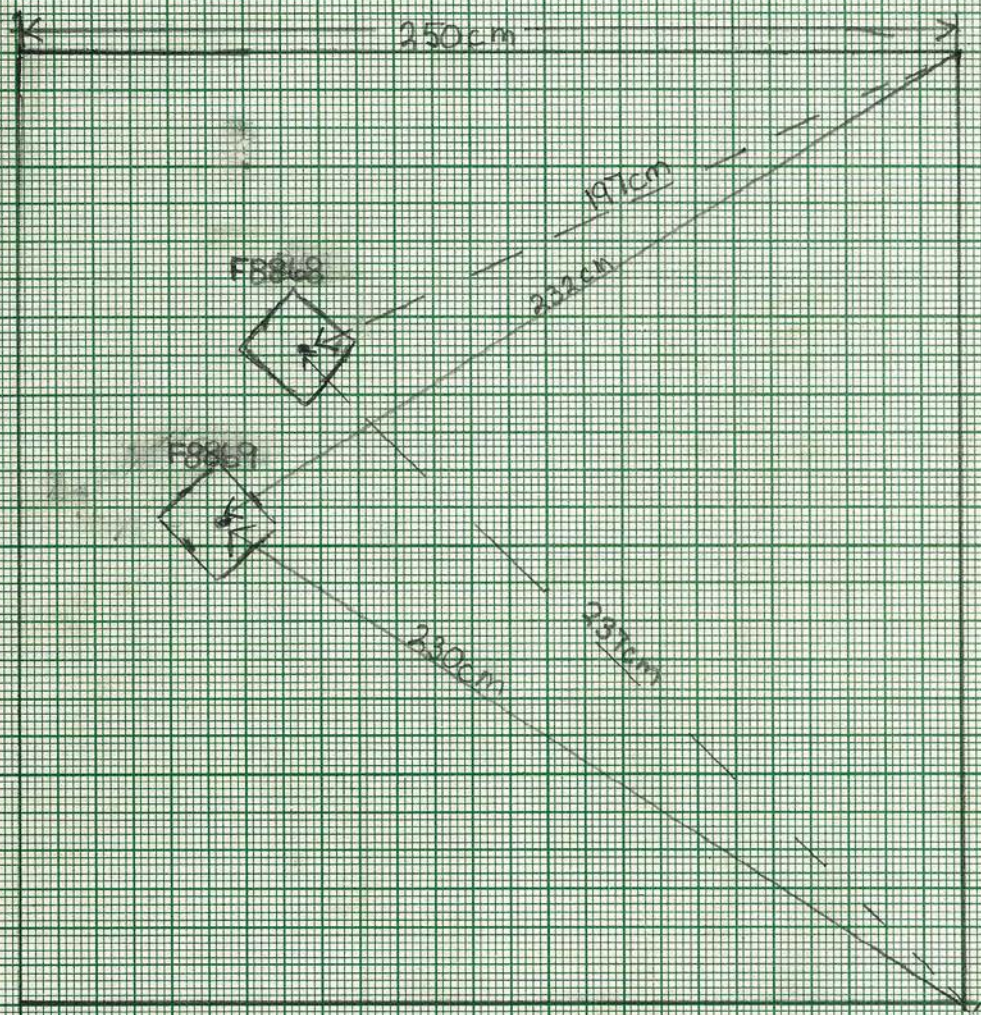
SAMPLES TAKEN:

     Soil (no.     )

     Constant Volume (no.     )

COMMENTS: *Piece of bone, broken bricks. molds taken down 10cm.*

Attach appropriate level drawings.



↑  
N

44 He380  
Eu 3119  
FB868  
FB869

LYNWOOD  
BARTHURST



EXCAVATION UNIT RECORD

Curles Plantation

44He388

E.U. # 3061

RECORDED BY Dawn + Sativa

DATES Thurs, 16 June 88

BEGUN

COMPLETED

TYPE OF UNIT:

- Test pit (no. \_\_\_\_\_) (attach to Test Pit Record)
- Square (size \_\_\_\_\_) (attach to Square Record)
- Trench (no. \_\_\_\_\_) (attach to Trench Record)
- Feature (no. F-69) (attach to Feature Record)
- Post hole (no. \_\_\_\_\_) (attach to Pier/Post Record)
- Post mold (no. \_\_\_\_\_) (attach to Pier/Post Record)
- Pier (no. \_\_\_\_\_) (attach to Pier/Post Record)

(old series)

PROVENIENCE: (skip if feature)  Exact  Square  
 (SW corner) 159 N 170 E *(section of F-69 between trenches 87A @ 160N 170E & 155N 170E)*

DEPTHS: Top \_\_\_\_\_ Bottom 2.35 BELOW datum plane

STRATUM \_\_\_\_\_ LEVEL \_\_\_\_\_

E.U.s ABOVE \_\_\_\_\_

E.U.s BELOW 3076 \_\_\_\_\_

CORRELATED E.U.s \_\_\_\_\_

SOIL DESCRIPTION:

EXCAVATED BY:  Trowel  Shovel  Screened

SAMPLES TAKEN:

- Soil (no. \_\_\_\_\_)
- Constant Volume (no. \_\_\_\_\_)

COMMENTS:

Attach appropriate level drawings.

EXCAVATION UNIT RECORD

Curles Plantation

44He388

E.U. # 3082

RECORDED BY [Signature]

DATES 21 June  
BEGUN

28 June  
COMPLETED

TYPE OF UNIT: Ditch

\_\_\_ Test pit (no. \_\_\_\_\_) (attach to Test Pit Record)

\_\_\_ Square (size \_\_\_\_\_) (attach to Square Record)

\_\_\_ Trench (no. \_\_\_\_\_) (attach to Trench Record)

Feature (no. 69) (attach to Feature Record)

\_\_\_ Post hole (no. \_\_\_\_\_) (attach to Pier/Post Record)

\_\_\_ Post mold (no. \_\_\_\_\_) (attach to Pier/Post Record)

\_\_\_ Pier (no. \_\_\_\_\_) (attach to Pier/Post Record)

PROVENIENCE: (skip if feature) \_\_\_ Exact \_\_\_ Square

(SW corner) \_\_\_\_\_ N \_\_\_\_\_ E

DEPTHS: Top \_\_\_\_\_ Bottom \_\_\_\_\_ BELOW \_\_\_\_\_

STRATUM \_\_\_\_\_ LEVEL \_\_\_\_\_

E.U.s ABOVE \_\_\_\_\_

E.U.s BELOW \_\_\_\_\_

CORRELATED E.U.s \_\_\_\_\_

SOIL DESCRIPTION:

EXCAVATED BY:  Trowel \_\_\_ Shovel \_\_\_ Screened

SAMPLES TAKEN:

\_\_\_ Soil (no. \_\_\_\_\_)

\_\_\_ Constant Volume (no. \_\_\_\_\_)

COMMENTS: BRICK 5 qt  
MORTAR 4 qt  
TILE 3 ct

SECTION ALONG TRENCH 87 A south END

Attach appropriate level drawings.

FEATURE RECORD

Curles Plantation

44He388

Feature # 88-70

RECORDED BY ALLEGY LUKIANT

DATES 7 JULY 1988

7 JULY 1988

Begun

Completed

TYPE OF FEATURE: SIX INCH DEEP CLAY FEATURE, ABOUT FLOOD TIDE, FAN SHAPED

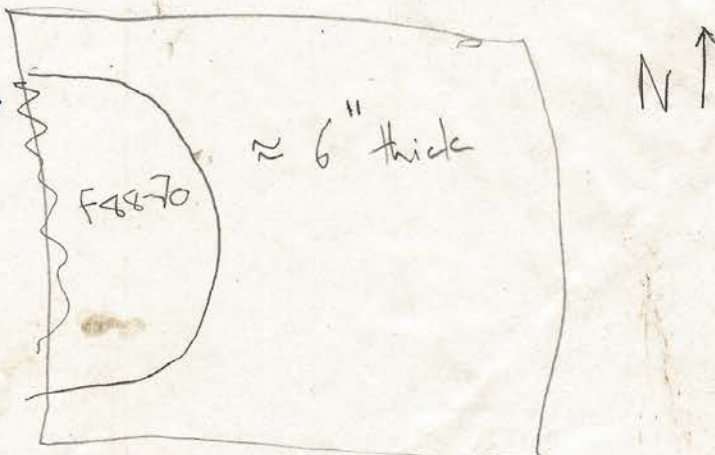
DIMENSIONS:

DEPTHS: Top \_\_\_\_\_ Bottom \_\_\_\_\_ BELOW \_\_\_\_\_

ASSOCIATED E.U. #'s:

<u>3123</u>	Description	<u>FAN SHAPED SIX INCH THICK CLAY LENS</u>
_____	Description	_____
_____	Description	_____
_____	Description	_____
_____	Description	_____
_____	Description	_____
_____	Description	_____
_____	Description	_____
_____	Description	_____
_____	Description	_____
_____	Description	_____
_____	Description	_____
_____	Description	_____
_____	Description	_____

COMMENTS: FOUND IN THIS  
FEATURE WERE A NAIL,  
KOLLEND PIPE-STEM, IRON  
BONG, NAILS AND SMALL BONES



Attach appropriate profile drawings.

FEATURE RECORD

Curles Plantation

44He388

Feature # 88-71

RECORDED BY F. B. L.

DATES 8 July 88  
Begun

8 July 88  
Completed

TYPE OF FEATURE:  
post hole

DIMENSIONS:

DEPTHS: Top \_\_\_\_\_ Bottom \_\_\_\_\_ BELOW \_\_\_\_\_

ASSOCIATED E.U. #'s:

- 3124 Description fill-excavated only to ca the bottom of
- \_\_\_\_\_ Description the floor tiles to see if it continues
- \_\_\_\_\_ Description (it does).
- \_\_\_\_\_ Description \_\_\_\_\_
- \_\_\_\_\_ Description \_\_\_\_\_
- \_\_\_\_\_ Description \_\_\_\_\_
- \_\_\_\_\_ Description \_\_\_\_\_
- \_\_\_\_\_ Description \_\_\_\_\_
- \_\_\_\_\_ Description \_\_\_\_\_
- \_\_\_\_\_ Description \_\_\_\_\_
- \_\_\_\_\_ Description \_\_\_\_\_
- \_\_\_\_\_ Description \_\_\_\_\_
- \_\_\_\_\_ Description \_\_\_\_\_

COMMENTS:

possibly a door frame / floor joist support post

Attach appropriate profile drawings.



EXCAVATION UNIT RECORD

Curles Plantation

44He388

E.U. # 3124

RECORDED BY F. Blum

DATES 8 July 88  
BEGUN

8 July 88  
COMPLETED

TYPE OF UNIT:

Test pit (no. \_\_\_\_\_) (attach to Test Pit Record)

Square (size \_\_\_\_\_) (attach to Square Record)

Trench (no. \_\_\_\_\_) (attach to Trench Record)

Feature (no. F88-71) (attach to Feature Record)

Post hole (no. \_\_\_\_\_) (attach to Pier/Post Record)

Post mold (no. \_\_\_\_\_) (attach to Pier/Post Record)

Pier (no. \_\_\_\_\_) (attach to Pier/Post Record)

PROVENIENCE: (skip if feature)  Exact  Square

(SW corner) \_\_\_\_\_ N \_\_\_\_\_ E

DEPTHS: Top \_\_\_\_\_ Bottom \_\_\_\_\_ BELOW \_\_\_\_\_

STRATUM \_\_\_\_\_ LEVEL \_\_\_\_\_

E.U.s ABOVE \_\_\_\_\_

E.U.s BELOW \_\_\_\_\_

CORRELATED E.U.s \_\_\_\_\_

SOIL DESCRIPTION:

EXCAVATED BY:  Trowel  Shovel  Screened

SAMPLES TAKEN:

Soil (no. \_\_\_\_\_)

Constant Volume (no. \_\_\_\_\_)

COMMENTS:

*top portion of post hole - only excavated to ca bottom of tiles - contained many sturgeon plates - also frags of roofing tiles, bricks, mortar - also a ca 1-1.5" diameter piece of charcoal (vertical) - may be a door support post / floor joint support.*

Attach appropriate level drawings.

EXCAVATION UNIT RECORD

(Duplicate - ORIGINAL w/ CHRIS Eghart)

Curles Plantation

44He388

E.U. # 3100

RECORDED BY CB

DATES 6-30-88  
BEGUN

7-6-88  
COMPLETED

TYPE OF UNIT:

Test pit (no. \_\_\_\_\_) (attach to Test Pit Record)

Square (size \_\_\_\_\_) (attach to Square Record)

Trench (no. \_\_\_\_\_) (attach to Trench Record)

Feature (no. F81) (attach to Feature Record)

Post hole (no. \_\_\_\_\_) (attach to Pier/Post Record)

Post mold (no. \_\_\_\_\_) (attach to Pier/Post Record)

Pier (no. \_\_\_\_\_) (attach to Pier/Post Record)

*end of brick & mortar rubble*

PROVENIENCE: (skip if feature)  Exact  Square

(SW corner) \_\_\_\_\_ N \_\_\_\_\_ E

DEPTHS: Top \_\_\_\_\_ Bottom \_\_\_\_\_ BELOW \_\_\_\_\_

STRATUM \_\_\_\_\_ LEVEL \_\_\_\_\_

E.U.s ABOVE \_\_\_\_\_

E.U.s BELOW \_\_\_\_\_

CORRELATED E.U.s \_\_\_\_\_

SOIL DESCRIPTION:

EXCAVATED BY:  Trowel  Shovel  Screened

SAMPLES TAKEN:

Soil (no. \_\_\_\_\_)

Constant Volume (no. \_\_\_\_\_)

COMMENTS: *Right jawbone of wild pig, ceramics, roof tile broken bricks*

Attach appropriate level drawings.

EXCAVATION UNIT RECORD

Curles Plantation

44He388

E.U. # 3100

RECORDED BY Chris E

DATES 30 June

BEGUN

COMPLETED

TYPE OF UNIT:

Test pit (no. \_\_\_\_\_) (attach to Test Pit Record)

Square (size \_\_\_\_\_) (attach to Square Record)

Trench (no. \_\_\_\_\_) (attach to Trench Record)

Feature (no. F-81) (attach to Feature Record)

Post hole (no. \_\_\_\_\_) (attach to Pier/Post Record)

Post mold (no. \_\_\_\_\_) (attach to Pier/Post Record)

Pier (no. \_\_\_\_\_) (attach to Pier/Post Record)

PROVENIENCE: (skip if feature)  Exact  Square

(SW corner) \_\_\_\_\_ N \_\_\_\_\_ E

DEPTHS: Top \_\_\_\_\_ Bottom \_\_\_\_\_ BELOW \_\_\_\_\_

STRATUM \_\_\_\_\_ LEVEL \_\_\_\_\_

E.U.s ABOVE \_\_\_\_\_

E.U.s BELOW \_\_\_\_\_

CORRELATED E.U.s \_\_\_\_\_

SOIL DESCRIPTION:

EXCAVATED BY:  Trowel  Shovel  Screened

SAMPLES TAKEN:

Soil (no. \_\_\_\_\_)

Constant Volume (no. \_\_\_\_\_)

COMMENTS:

Attach appropriate level drawings.

EXCAVATION UNIT RECORD

Curles Plantation

44He388

E.U. # 3121

RECORDED BY LCB

DATES July 6, 1988  
BEGUN

7-7-88  
COMPLETED

TYPE OF UNIT:

- Test pit (no. \_\_\_\_\_) (attach to Test Pit Record)
- Square (size \_\_\_\_\_) (attach to Square Record)
- Trench (no. \_\_\_\_\_) (attach to Trench Record)
- Feature (no. <sup>half of</sup> F81) (attach to Feature Record)
- Post hole (no. \_\_\_\_\_) (attach to Pier/Post Record)
- Post mold (no. \_\_\_\_\_) (attach to Pier/Post Record)
- Pier (no. \_\_\_\_\_) (attach to Pier/Post Record)

PROVENIENCE: (skip if feature)  Exact  Square

(SW corner) \_\_\_\_\_ N \_\_\_\_\_ E

DEPTHS: Top \_\_\_\_\_ Bottom \_\_\_\_\_ BELOW \_\_\_\_\_

STRATUM \_\_\_\_\_ LEVEL \_\_\_\_\_

E.U.s ABOVE 3100 \_\_\_\_\_

E.U.s BELOW \_\_\_\_\_

CORRELATED E.U.s \_\_\_\_\_

SOIL DESCRIPTION:

EXCAVATED BY:  Trowel  Shovel  Screened

SAMPLES TAKEN:

Soil (no. \_\_\_\_\_)

Constant Volume (no. \_\_\_\_\_)

COMMENTS:

~~Some bone, brick fragments, roof tile~~  
Some bone, brick fragments, roof tile

Attach appropriate level drawings.